

www.indiratrade.com



MONDAY

CURRENCY COMMODITIES

WEEKLY REPORT

05 AUG 2019 TO 09 AUG 2019

EDGE



INDIRA SECURITIES PVT. LTD.



WEEKLY INDICES CHANGES

INDEX	CLOSE	PREV. CLOSE	Change (%)
SENSEX	37118.22	37882.79	-2.02%
NIFTY	10,997.30	11,284.30	-2.54%
DOW	26485	27192.4	-2.60%
NASDAQ	8004.07	8330.21	-3.92%
FTSE	7407.06	7549.06	-1.88%
NIKKEI	21067.8	21516.5	-2.09%
DAX	11,872.40	12,419.90	-4.41%
CAC	5,359.00	5,610.05	-4.48%

SS

Market Round Up:

- U.S. Dollar Rises after GDP Slows Slightly in Q2: - The U.S. dollar was stronger against other currencies on Friday after growth in the U.S. economy slowed less than expected, though trade tensions weighed on business.
- Second-quarter gross domestic product (GDP) increased at an annual rate of 2.1% from 3.1% in the first quarter, compared to estimates for 1.8% growth. Consumer spending rose 4.3%, while exports dropped 5.2% and imports inched up just 0.1%, indicating trade tensions between the U.S. and China are weighing on expansion.
- The numbers support the case for the Federal Reserve to be less aggressive on easing monetary policy, with investor expectations for rates falling 50 basis points this year cut to 19.4% and odds for three cuts dipping slightly.
- The U.S. dollar index, which measures the greenback's strength against a basket of six major currencies, rose 0.2% to 97.667.
- The dollar rose against the Japanese yen, with USD/JPY up 0.1% to 108.68.
- GBP/USD fell 0.3% to 1.2415, while EUR/USD slipped 0.1% to 1.1130, and USD/CAD gained 0.2% to 1.3186.

RBI REFERENCE RATE

INDEX	CLOSE	PREV. CLOSE
USDINR	69.0580	69.0611
EURINR	76.3059	76.9437
JPYINR	63.2400	63.5800
GBPINR	83.7457	85.8494

FII FIGURES

DATE	FII FIGURES IN CRORE
29/07	-704
30/07	-644
31/07	-1497
01/08	-1056
02/08	-2888
NET	-6789

DII FIGURES

DATE	DII FIGURES IN CRORE
29/07	1351
30/07	1079
31/07	2479
01/08	561
02/08	2812
NET	+8282



DOLLAR INDEX CHART



US Dollar Index	
RSI(14)	BUY
STOCH(9,6)	BUY
STOCHRSI(14)	BUY
MACD(12,26)	BUY
ADX(14)	SELL
Williams %R	BUY
CCI(14)	BUY
Highs/Lows(14)	BUY
Ultimate Oscillator	SELL
ROC	BUY
BUY	7
SELL	2
NEUTRAL	0
SUMMARY	STRONG BULLISH

USDINR TECHNICAL CHART (INDIAN RUPEE)



USDINR.Rolling	
RSI(14)	BUY
STOCH(9,6)	BUY
STOCHRSI(14)	BUY
MACD(12,26)	SELL
ADX(14)	SELL
Williams %R	NETURAL
CCI(14)	SELL
Highs/Lows(14)	0
Ultimate Oscillator	BUY
ROC	SELL
BUY	4
SELL	5
NEUTRAL	1
SUMMARY	NETURAL



DOMESTIC CURRENCY

Domestic	S2	S1	PIVOT	R1	R2
USDINR	68.72	68.82	68.99	69.09	69.27
EURINR	76.16	76.47	77.04	77.34	77.91
GBPINR	85.07	85.37	85.92	86.22	86.77
JPYINR	63.04	63.26	63.68	63.9	64.32

GLOBAL CURRENCY

Global	S2	S1	PIVOT	R1	R2
DOLLAR INDEX	96.74	97.32	97.7	98.28	98.66
EURUSD	1.1	1.11	1.12	1.12	1.13
GBPUSD	1.23	1.24	1.25	1.25	1.26
USDJPY	107.37	108.02	108.36	109.01	109.35

CURRENCY PERFORMANCE

CURRENCY	CLOSE PRICE	DAY	WEEK	MONTHLY	YEARLY
EURO	1.11075	0.22%	-0.16%	-1.50%	-3.97%
POUND	1.21478	0.14%	-1.88%	-3.37%	-6.59%
AUSTRALIAN DOLLAR	0.68	0.01%	-1.56%	-3.24%	-8.10%
NEWZEALAND DOLLAR	0.65356	-0.39%	-1.47%	-2.51%	-3.05%
YEN	106.58	-0.70%	-1.92%	-1.15%	-4.20%
YUAN	6.97294	0.27%	1.34%	1.31%	1.84%
SWISS FRANC	0.98162	-0.86%	-1.18%	-0.49%	-1.26%
CANADIAN DOLLAR	1.31955	-0.12%	0.22%	1.09%	1.60%
MEXICAN PESO	19.3015	0.36%	1.40%	1.53%	4.06%
INDIAN RUPEE	69.64	0.92%	1.12%	1.24%	1.60%
BRAZILIAN REAL	3.8873	1.26%	2.97%	1.61%	4.86%
RUSSIAN RUBBLE	65.2691	1.40%	3.07%	3.09%	3.11%
DOLLAR INDEX	98.1	-0.27%	0.10%	1.38%	2.98%
KORREAN WON	1166.87	-2.39%	-1.38%	-0.24%	3.97%
SOUTH AFRICAN RAND	14.7623	0.74%	3.30%	5.12%	10.87%
SINGAPORE DOLLAR	1.37649	-0.02%	0.50%	1.53%	0.75%
HONGKONG DOLLAR	7.82655	0.01%	0.10%	0.37%	-0.28%

COMMODITIES

FUNDAMENTAL OF COMMODITIES

MAJOR COMMODITIES

MCX ENERGY WEEKLY

Commodity	S2	S1	Pivot	R1	R2
Crude oil	3752.3	3810.7	3900.3	3958.7	4048.3
Natural Gas	142.5	146.2	153.4	157.1	164.3

MCX BASE METAL WEEKLY

Commodity	S2	S1	Pivot	R1	R2
Copper	433.3	438.9	448.9	454.5	464.5
Zinc	186.2	188.3	191.6	193.7	197.0
Lead	148.0	153.3	156.4	161.6	164.7
Nickel	957.1	976.2	997.6	1016.7	1038.1

PRECIOUS METAL WEEKLY

Commodity	S2	S1	Pivot	R1	R2
Gold	34417.7	34595.3	34900.7	35078.3	35383.7
Silver	40258.0	40705.0	41265.0	41712.0	42272.0

Updates:

- Oil Prices Set for Weekly Gain as Middle East Tensions Outweigh Economic Concerns: - Oil prices were on track for weekly gains as Middle East tensions supported prices while traders waited for the latest reading on U.S. economic growth amid hopes that central banks would tackle any weakness. U.S crude was on track for weekly gains of 1.2%, while Brent was up 2.0% from a week ago.
- Concerns over a global slowdown that could negatively impact demand for oil have limited gains in crude.
- Gold Prices Hold Gains, Despite U.S. GDP Hit to Chance of Big Fed Rate Cut: - Gold prices were still on the rise Friday even though better-than-expected U.S. growth cast doubt on the need for the Federal Reserve to ease monetary policy dramatically.

International Commodity	S2	S1	Pivot	R1	R2	CMP	PREV CLOSE
Gold COMEX	\$1,398.33	\$1,408.67	\$1,421.33	\$1,431.67	\$1,444.33	\$1,432.00	\$1,419.00
SILVER COMEX	15.94	16.17	16.43	16.66	16.92	16.18	16.4
NYMEX CRUDE	54.08	55.14	56.39	57.45	58.7	53.95	56.2
BRENT CRUDE	61.49	62.39	63.53	64.43	65.57	61.02	63.3



COMMODITIES

MAJOR COMMODITIES

Commodity Major	Price	Day	Weekly	Monthly	Yearly
Crude Oil	55.1084	2.30%	-1.94%	-3.89%	-19.54%
Brent	61.1939	1.14%	-3.57%	-4.11%	-16.41%
Natural gas	2.1418	-2.77%	-1.26%	-6.47%	-24.93%
Gold	1443.28	-0.32%	1.76%	1.74%	18.98%
Silver	16.1858	-0.99%	-1.23%	5.79%	5.24%
Platinum	842.5	-0.71%	-2.03%	0.72%	1.87%
Palladium	1406.5	-1.23%	-8.40%	-10.50%	54.65%
Copper	2.5603	-3.74%	-4.34%	-4.45%	-7.02%
Lead	1977.5	0.00%	-6.94%	5.21%	-6.05%
Aluminum	1770	-0.56%	-3.07%	-0.67%	-12.72%
Tin	16980	-1.99%	-4.87%	-4.07%	-13.37%
Zinc	2350	-2.25%	-3.69%	-5.20%	-10.68%



MCX GOLD CHART



Commodity	S2	S1	Pivot	R1	R2
Gold	34417.7	34595.3	34900.7	35078.3	35383.7

GOLD TECHNICAL INDICATOR

RSI(14)	BUY
STOCH(9,6)	SELL
STOCHRSI(14)	SELL
MACD(12,26)	BUY
ADX(14)	SELL
Williams %R	BUY
CCI(14)	BUY
Highs/Lows(14)	BUY
Ultimate Oscillator	BUY
ROC	BUY
BUY	6
SELL	3
NEUTRAL	0
SUMMARY	MILD BULLISH

GOLD INTERNATIONAL CHART



Commodity	S2	S1	Pivot	R1	R2
Gold	\$1,398.3	\$1,408.7	\$1,421.3	\$1,431.7	\$1,444.3

GOLD INTERNATIONAL TECHNICAL INDICATOR

RSI(14)	BUY
STOCH(9,6)	SELL
STOCHRSI(14)	SELL
MACD(12,26)	BUY
ADX(14)	BUY
Williams %R	BUY
CCI(14)	BUY
Highs/Lows(14)	BUY
Ultimate Oscillator	BUY
ROC	BUY
BUY	7
SELL	2
NEUTRAL	0
SUMMARY	STRONG BULLISH



MCX COPPER CHART



Commodity	S2	S1	Pivot	R1	R2
Copper	433.3	438.9	448.9	454.5	464.5

COPPER TECHNICAL INDICATOR

RSI(14)	BUY
STOCH(9,6)	SELL
STOCHRSI(14)	SELL
MACD(12,26)	BUY
ADX(14)	SELL
Williams %R	NETURAL
CCI(14)	BUY
Highs/Lows(14)	BUY
Ultimate Oscillator	SELL
ROC	BUY
BUY	4
SELL	4
NEUTRAL	1
SUMMARY	NETURAL

COPPER INTERNATIONAL CHART



Commodity	S2	S1	Pivot	R1	R2
Copper	\$2.630	\$2.660	\$2.710	\$2.740	\$2.790

COPPER INTERNATIONAL TECHNICAL INDICATOR

RSI(14)	SELL
STOCH(9,6)	SELL
STOCHRSI(14)	SELL
MACD(12,26)	SELL
ADX(14)	SELL
Williams %R	NETURAL
CCI(14)	SELL
Highs/Lows(14)	BUY
Ultimate Oscillator	SELL
ROC	SELL
BUY	1
SELL	8
NEUTRAL	1
SUMMARY	STRONG BEARISH

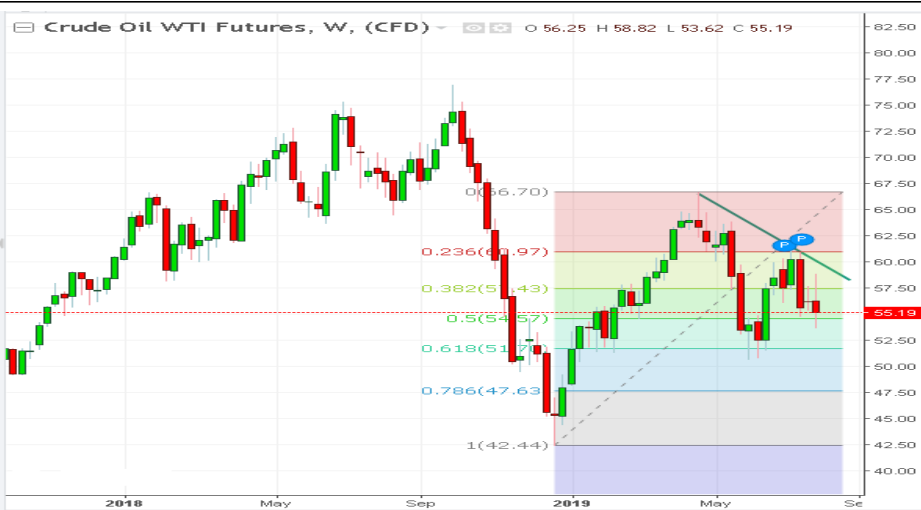


MCX CRUDE CHART



Commodity	S2	S1	Pivot	R1	R2
Crude oil	3525.7	3677.3	3925.7	4077.3	4325.7

NYMEX CRUDE CHART



Commodity	S2	S1	Pivot	R1	R2
Crude oil	\$50.9	\$53.4	\$57.1	\$59.6	\$63.3

CRUDEOIL TECHNICAL INDICATOR

RSI(14)	SELL
STOCH(9,6)	SELL
STOCHRSI(14)	SELL
MACD(12,26)	SELL
ADX(14)	SELL
Williams %R	NETURAL
CCI(14)	SELL
Highs/Lows(14)	BUY
Ultimate Oscillator	BUY
ROC	SELL
BUY	2
SELL	7
NEUTRAL	1
SUMMARY	STRONG BEARISH

CRUDE.OILNYM TECHNICAL INDICATOR

RSI(14)	SELL
STOCH(9,6)	SELL
STOCHRSI(14)	SELL
MACD(12,26)	SELL
ADX(14)	SELL
Williams %R	NETURAL
CCI(14)	SELL
Highs/Lows(14)	BUY
Ultimate Oscillator	SELL
ROC	SELL
BUY	1
SELL	8
NEUTRAL	1
SUMMARY	STRONG BEARISH



MCX NATURAL GAS

Natural Gas Futures, India, W, MCX -

O 149.90 H 161.50 L 145.50 C 150.60



Commodity	S2	S1	Pivot	R1	R2
Natural Gas	146.1	150.8	159.4	164.1	172.7

NATURALGAS TECHNICAL INDICATOR

RSI(14)	SELL
STOCH(9,6)	SELL
STOCHRSI(14)	SELL
MACD(12,26)	SELL
ADX(14)	SELL
Williams %R	SELL
CCI(14)	SELL
Highs/Lows(14)	BUY
Ultimate Oscillator	SELL
ROC	SELL
BUY	1
SELL	9
NEUTRAL	0
SUMMARY	STRONG BEARISH

NATURAL GAS INTERNATIONAL

Natural Gas Futures, W, (CFD) -

O 2.154 H 2.329 L 2.102 C 2.156



Commodity	S2	S1	Pivot	R1	R2
Natural Gas	\$2.090	\$2.170	\$2.320	\$2.400	\$2.550

NATURAL GAS INTER. TECHNICAL INDICATOR

RSI(14)	SELL
STOCH(9,6)	SELL
STOCHRSI(14)	SELL
MACD(12,26)	SELL
ADX(14)	SELL
Williams %R	SELL
CCI(14)	SELL
Highs/Lows(14)	BUY
Ultimate Oscillator	SELL
ROC	SELL
BUY	1
SELL	9
NEUTRAL	0
SUMMARY	STRONG BEARISH

IMP ECONOMIC DATA TO WATCH FOR THE WEEK

[illegible]



204 Amardarshan Building 3rd floor Saket Nagar , Indore-452018

Call: 0731-4797170-173 **Mob:** +91-9303172345 / **Toll Free:** 18001030059 / **SMS:** <INDIRA> to 56070

DISCLAIMER

This report is for private circulation within the Indira Group. This report is strictly confidential and for information of the selected recipient only and may not be altered in any way, transmitted to, copied or distributed, in part or in whole, to any other person or to the media or reproduced in any form. This report should not be construed as an offer or solicitation to buy or sell any securities or any interest in securities. It does not constitute a personal recommendation or take into account the particular investment objectives, financial situations, or any such factor. The information, opinions estimates and forecasts contained here have been obtained from, or are based upon, sources we believe to be reliable, but no representation of warranty, express or implied, is made by us to their accuracy or completeness. Opinions expressed are our current opinions as of our current opinions as of the data appearing on this material only and are subject to change without notice.